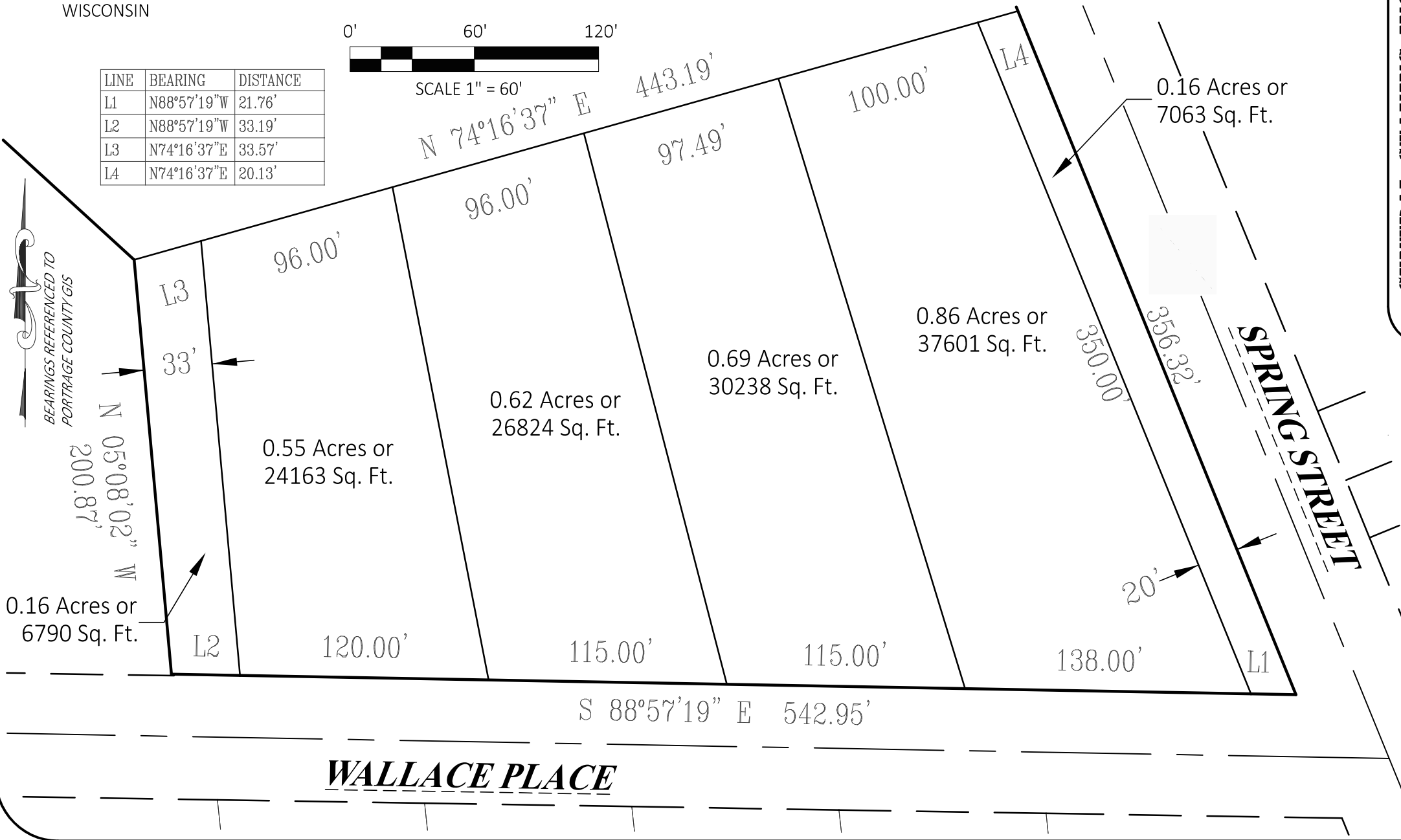
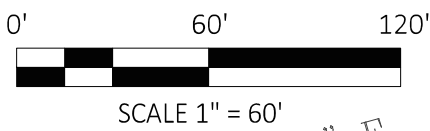


CONCEPTUAL LOT LAYOUT
 PREPARED FOR: THE VILLAGE OF WHITING
 P.I.D.: 191-29-08504, BEING A PART OF BLOCK 85, ASSESSOR'S PLAT OF WHITING,
 LOCATED IN SECTION 9, T23N R8E, VILLAGE OF WHITING, PORTAGE COUNTY,
 WISCONSIN

****NOTE:** Boundaries and features shown on this map were graphically scaled from GIS mapping and are shown for reference only. All measurements are approximate.

LINE	BEARING	DISTANCE
L1	N88°57'19"W	21.76'
L2	N88°57'19"W	33.19'
L3	N74°16'37"E	33.57'
L4	N74°16'37"E	20.13'



CENTRAL STAKING INC.

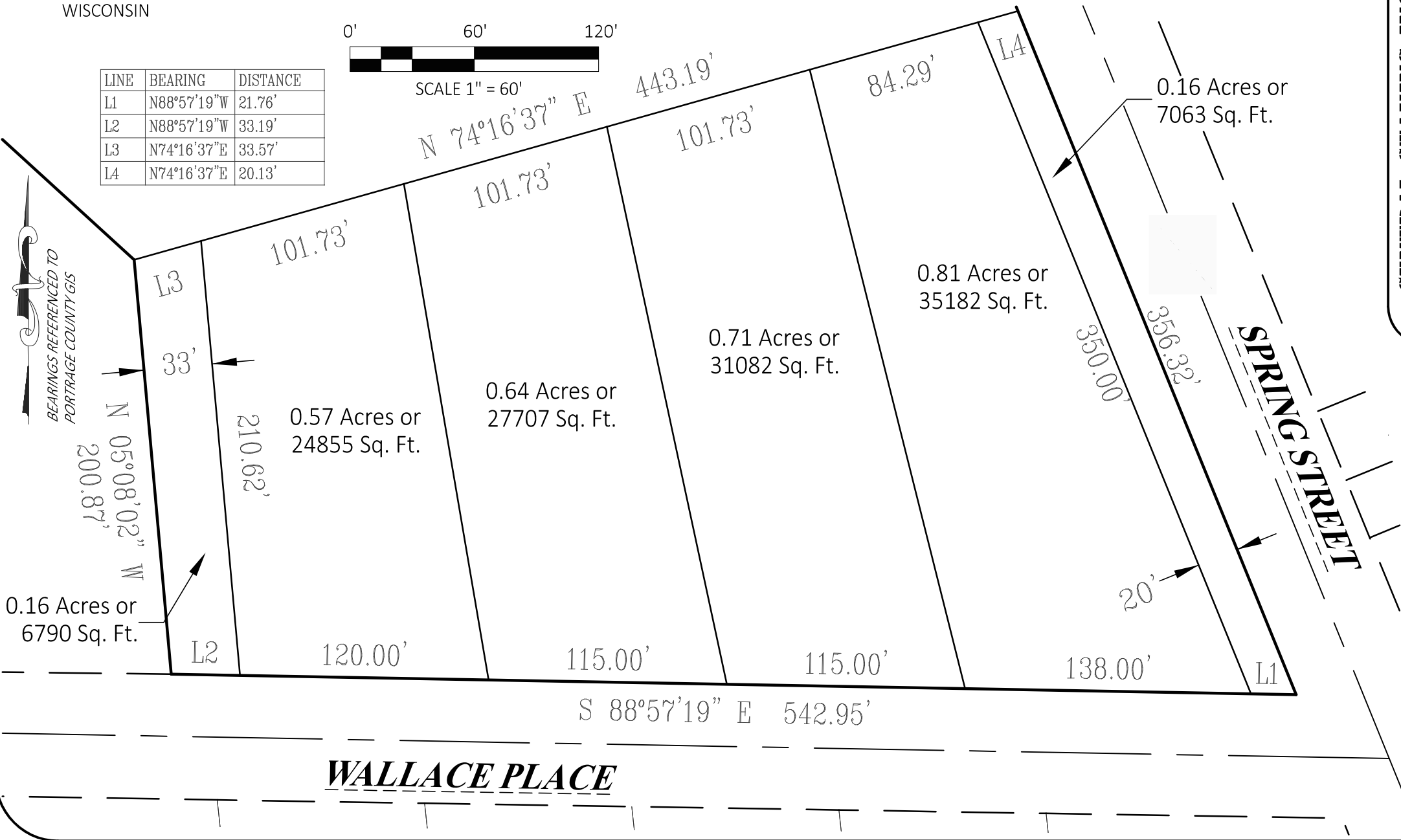
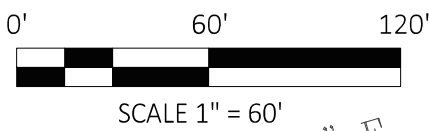
2523 POST ROAD
 STEVENS POINT WI 54481
 OFFICE: 715-345-6904 FAX: 715-345-7728

Project: L22-054
 Drawn by: N. Loehrke Plot Date: 12/6/2022
 Layout "D"

CONCEPTUAL LOT LAYOUT
 PREPARED FOR: THE VILLAGE OF WHITING
 P.I.D.: 191-29-08504, BEING A PART OF BLOCK 85, ASSESSOR'S PLAT OF WHITING,
 LOCATED IN SECTION 9, T23N R8E, VILLAGE OF WHITING, PORTAGE COUNTY,
 WISCONSIN

**NOTE: Boundaries and features shown on this map were graphically scaled from GIS mapping and are shown for reference only. All measurements are approximate.

LINE	BEARING	DISTANCE
L1	N88°57'19"W	21.76'
L2	N88°57'19"W	33.19'
L3	N74°16'37"E	33.57'
L4	N74°16'37"E	20.13'

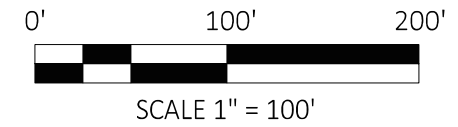
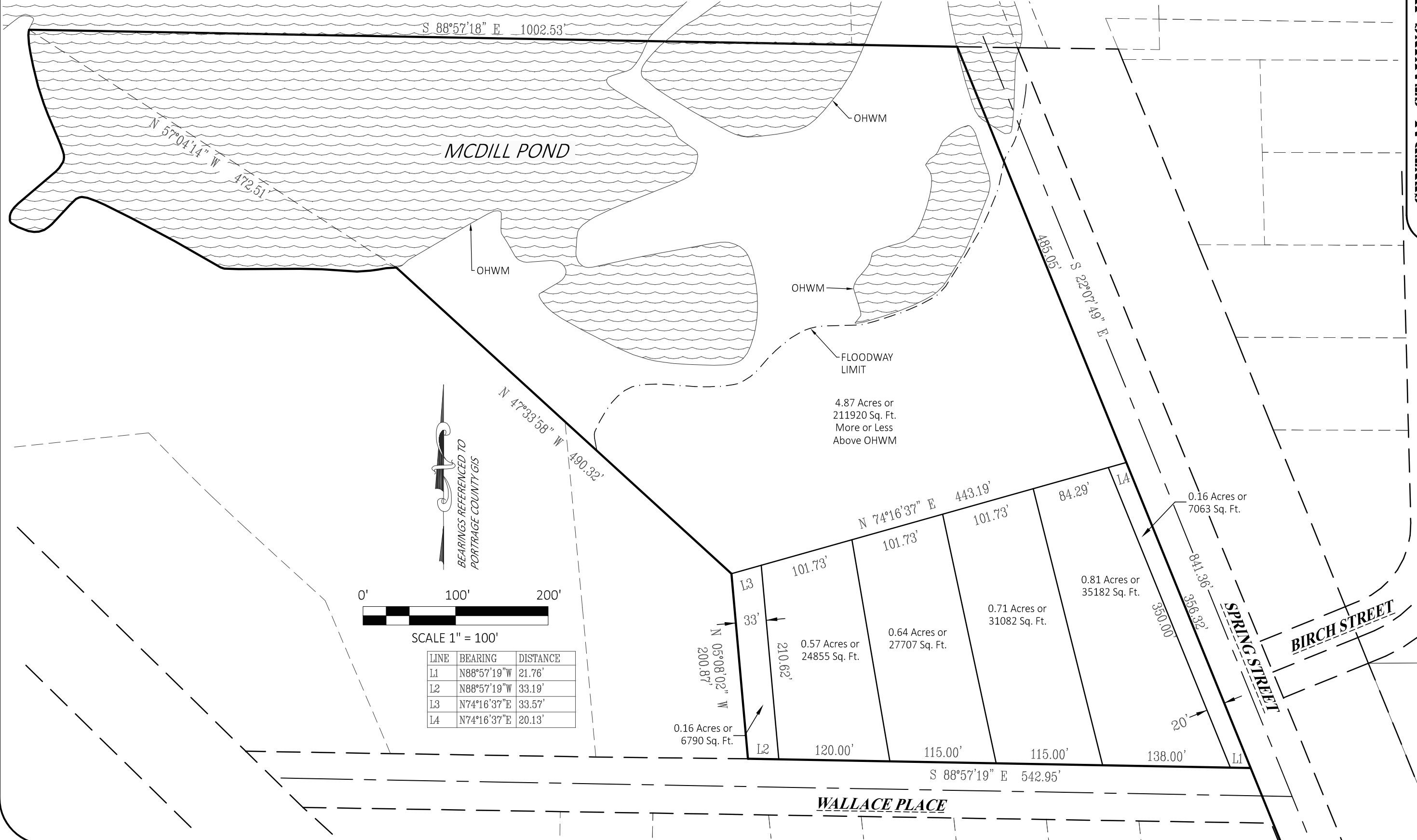


CENTRAL STAKING INC.
 2523 POST ROAD
 STEVENS POINT WI 54481
 OFFICE: 715-345-6904 FAX: 715-345-7728

Layout "C"
 Drawn by: N. Loehrke Plot Date: 12/6/2022
 Project: L22-054

CONCEPTUAL LOT LAYOUT
 PREPARED FOR: THE VILLAGE OF WHITING
 P.I.D.: 191-29-08504, BEING A PART OF BLOCK 85, ASSESSOR'S PLAT OF WHITING,
 LOCATED IN SECTION 9, T23N R8E, VILLAGE OF WHITING, PORTAGE COUNTY,
 WISCONSIN

****NOTE:** Boundaries and features shown on this map were graphically scaled from GIS mapping and are shown for reference only. All measurements are approximate.



LINE	BEARING	DISTANCE
L1	N88°57'19"W	21.76'
L2	N88°57'19"W	33.19'
L3	N74°16'37"E	33.57'
L4	N74°16'37"E	20.13'

CENTRAL STAKING INC.

2523 POST ROAD
 STEVENS POINT WI 54481
 OFFICE: 715-345-6904 FAX: 715-345-7728

Layout "C"
 Drawn by: N. Loehrke
 Project: L22-054
 Plot Date: 12/6/2022